



12 Masefield Street Spring Gully VIC

3 2 2

Nestled amidst the picturesque landscape of Spring Gully, this elevated and private property offers a tranquil escape. Imagine waking up each morning to breathtaking views of the adjacent bushland reserve and creek, creating a peaceful atmosphere.

The home's prime location provides easy access to all the local amenities Spring Gully has to offer, including the vibrant walking tracks, sporting fields, schools, shops, and cafes. Its also a very quick drive to the Bendigo CBD.

Step inside this spacious brick residence and be greeted by a sense of warmth and comfort. The open-plan living and dining area flows seamlessly into a well-appointed kitchen, making it an ideal space for entertaining friends and family.

[For full version visit the website](https://www.dck.com.au)

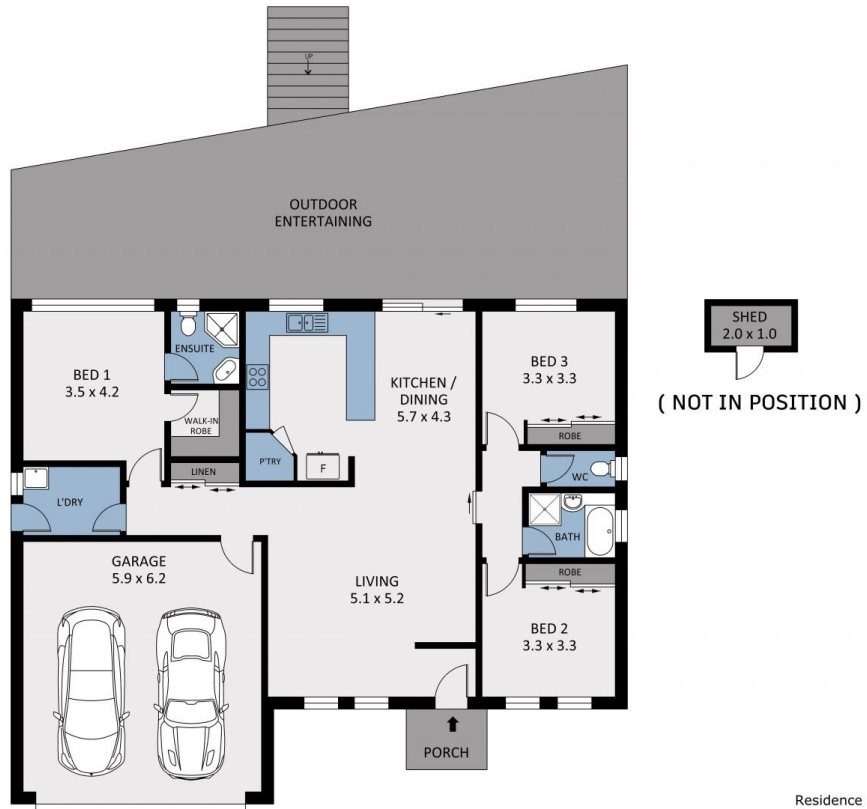
Type : House
Price : \$580,000 - \$610,000
Land Size : 721 sqm
View : <https://www.dck.com.au/sale/vic/greater-bendigo-region/spring-gully/residential/house/8140514>



Justin Pell
(03) 5440 5000



Marc Cox
(03) 5440 5000



Scale in metres. Indicative only. Dimensions are approximate. All information contained herein is gathered from sources we believe to be reliable. However we cannot guarantee its accuracy and interested parties should rely on their own enquiries.

Residence	- 115m ²
Garage	- 37m ²
Ent. Area	- 69m ²
Shed	- 2m ²
Porch	- 3m ²
Total	- 226m²



12 Masefield Street, Spring Gully