



124 Emu Creek Road Strathfieldsaye VIC

6 3 12

Are you dreaming of a European holiday?

This stunning bi-level home is reminiscent of a Tuscan villa with a white gravel driveway and forecourt.

Set on approximately 3.80 hectares (almost 10 acres), it is an elegant private sanctuary with ample space for families, guests, and high-end events.

Behind double front doors, the entry foyer features sky-high ceilings, an opulent chandelier, & a wrought-iron balustraded staircase.

The left-wing includes a light-filled library/media/sitting room, a games room with billiard-table lighting, a bar, and

Type : House
Price : \$2.8 million
Land Size : 3.8 ha
View : <https://www.dck.com.au/sale/vic/greater-bendigo-region/strathfieldsaye/residential/house/8137772>

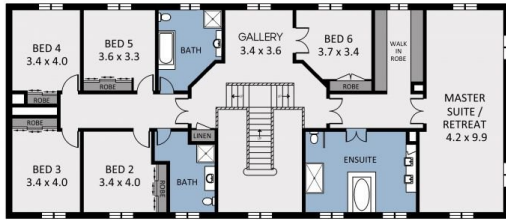


Matt Bowles
5440 5011



Marc Cox
(03) 5440 5000

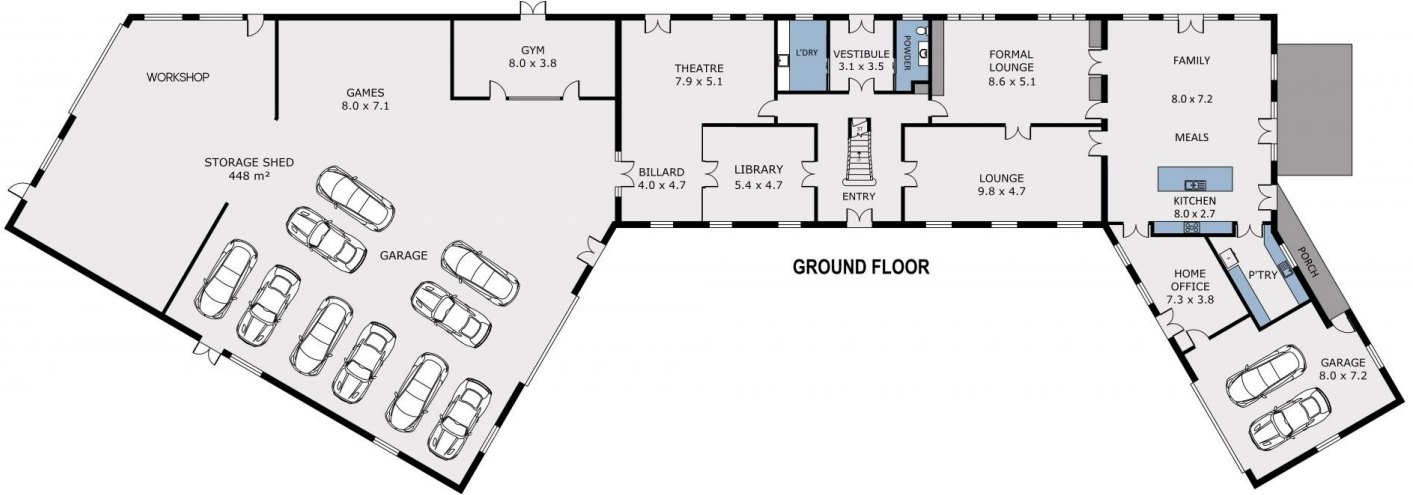
[For full version visit the website](https://www.dck.com.au)



FIRST FLOOR



(NOT IN POSITION)



GROUND FLOOR



Scale in metres. Indicative only. Dimensions are approximate. All information contained herein is gathered from sources we believe to be reliable. However we cannot guarantee its accuracy and interested parties should rely on their own enquiries.

Residence	-	793.7m ²
Porch	-	5.6m ²
Garage	-	51.8m ²
Shed	-	85.5m ²
ST. Shed	-	488.0m ²
Total	-	1,424.6m ²



124 Emu Creek Road, Strathfieldsaye