



982 Wellington Street Strathfieldsaye VIC

3 1 2

Welcome to 982 Wellington Street, Strathfieldsaye, otherwise known as 'Banyula,' this property is one of the oldest in Strathfieldsaye, with a house built circa the mid-1940s, possibly post-World War II, and boasts some of the oldest trees in the area.

This picturesque property set on nearly two acres of tranquil countryside, offers the perfect escape for those seeking space, serenity and convenience.

This charming 3-bedroom brick cottage has been thoughtfully updated, featuring a renovated bathroom and updated kitchen, blending contemporary convenience with the charm of rural living. The master bedroom opens onto a private balcony, offering stunning views of the lush gardens

Type : House
Price : COMING SOON
Land Size : 7481 sqm
View : <https://www.dck.com.au/sale/vic/greater-bendigo-region/strathfieldsaye/residential/house/8132100>

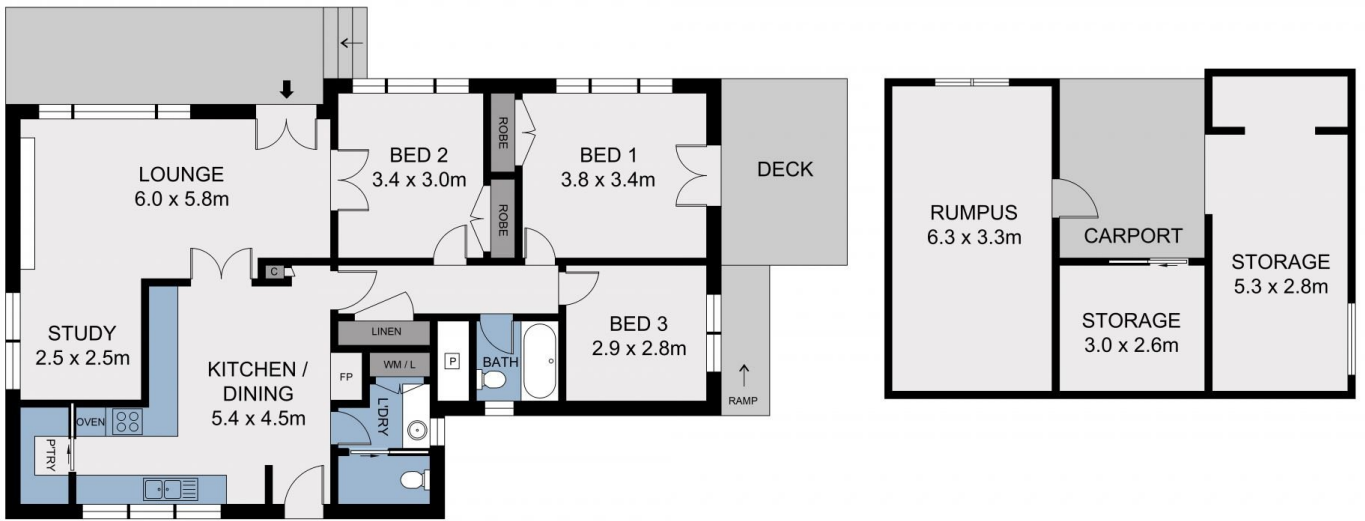


Justin Pell
(03) 5440 5000



Marc Cox
(03) 5440 5000

[For full version visit the website](#)



Scale in metres. Indicative only. Dimensions are approximate. All information contained herein is gathered from sources we believe to be reliable. However we cannot guarantee its accuracy and interested parties should rely on their own enquiries.

Residence	- 104.3 m ²
Rumpus	- 20.7 m ²
Storage	- 22.6 m ²
Deck	- 10.0 m ²
Carport	- 11.1 m ²
Total	- 168.7 m ²



982 Wellington Street, Strathfieldsaye