



2/1 Stephens Court Strathdale VIC

2 1 1

This immaculate two-bedroom freestanding townhouse sits on a lot of approximately 524m², making it an ideal home for retirees or those seeking a modern residence in a convenient location.

Land Size : 524 sqm
View : <https://www.dck.com.au/sale/vic/greater-bendigo-region/strathdale/residential/house/8048065>

There is no Body Corporate with this one. It sits on its own title and doesn't share any land.

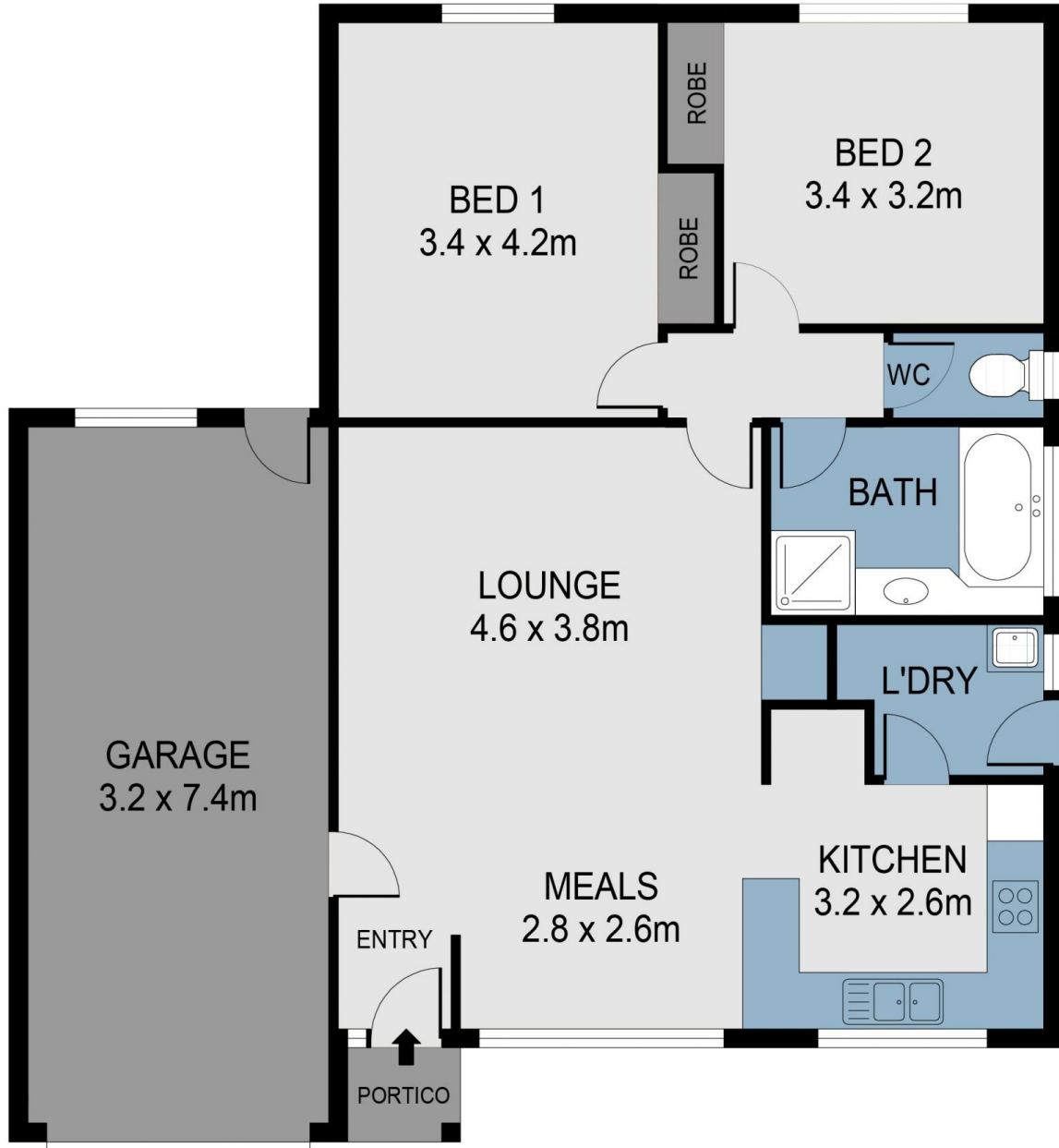
One of its best features would have to be the spacious north-facing living, dining, and kitchen areas. The updated kitchen is light and airy, featuring electric cooking, a dishwasher, a pantry, and a breakfast bar separating it from the light-filled dining area. The dining area is large enough for entertaining dinner guests and makes the perfect spot for enjoying your morning coffee and working on a crossword in the sunshine.



Kaye Lazenby
(03) 5440 5000



Justin Pell
(03) 5440 5000



0 1 2 3



SCALE (METRES)

SCALE IN METRES. INDICATIVE ONLY. DIMENSIONS ARE APPROXIMATE. ALL INFORMATION CONTAINED HEREIN IS GATHERED FROM SOURCES WE BELIEVE TO BE RELIABLE. HOWEVER WE CANNOT GUARANTEE ITS ACCURACY AND INTERESTED PARTIES SHOULD RELY ON THEIR OWN ENQUIRIES. Ref. No: 240622



INT : 90m²
 GARAGE : 24m²
 PORTICO : 1m²

2/1 STEPHENS COURT

