



1/3 Nandina Court Strathdale VIC

2 1 1

Introducing 1/3 Nandina Court, Strathdale, a charming home in a superb location close to Kennington Reservoir and bush reserve.

The property offers two bedrooms, one bathroom, and a spacious living area. Recently installed new carpets enhance the comfort and appeal of the home.

Perfect for owner-occupiers and investors alike, this property has a strong investment history and while short settlement terms are available for those needing quick occupancy.

Situated in a quiet court, the property boasts a peaceful and private setting. Outside, you'll find plenty of yard space with a single car undercover carport and garden shed.

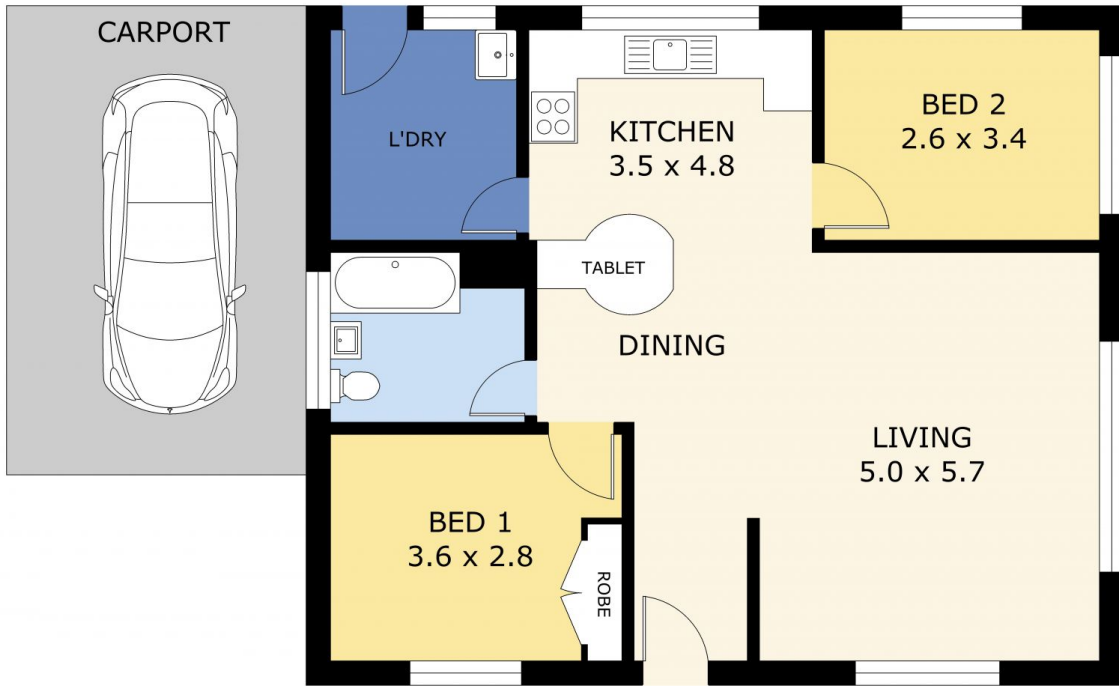
Price : \$ 315,000
Land Size : 279 sqm
View : <https://www.dck.com.au/sale/vic/greater-bendigo-region/strathdale/residential/unit/8005910>



Marc Cox
(03) 5440 5000



Justin Pell
(03) 5440 5000



Scale in metres. Indicative only. Dimensions are approximate. All information contained herein is gathered from sources we believe to be reliable. However we cannot guarantee its accuracy and interested parties should rely on their own enquiries.

Residence	- 74.1 m ²
Carport	- 21.4 m ²
Total	- 95.5 m ²



1 / 3 Nandina Court, Strathdale